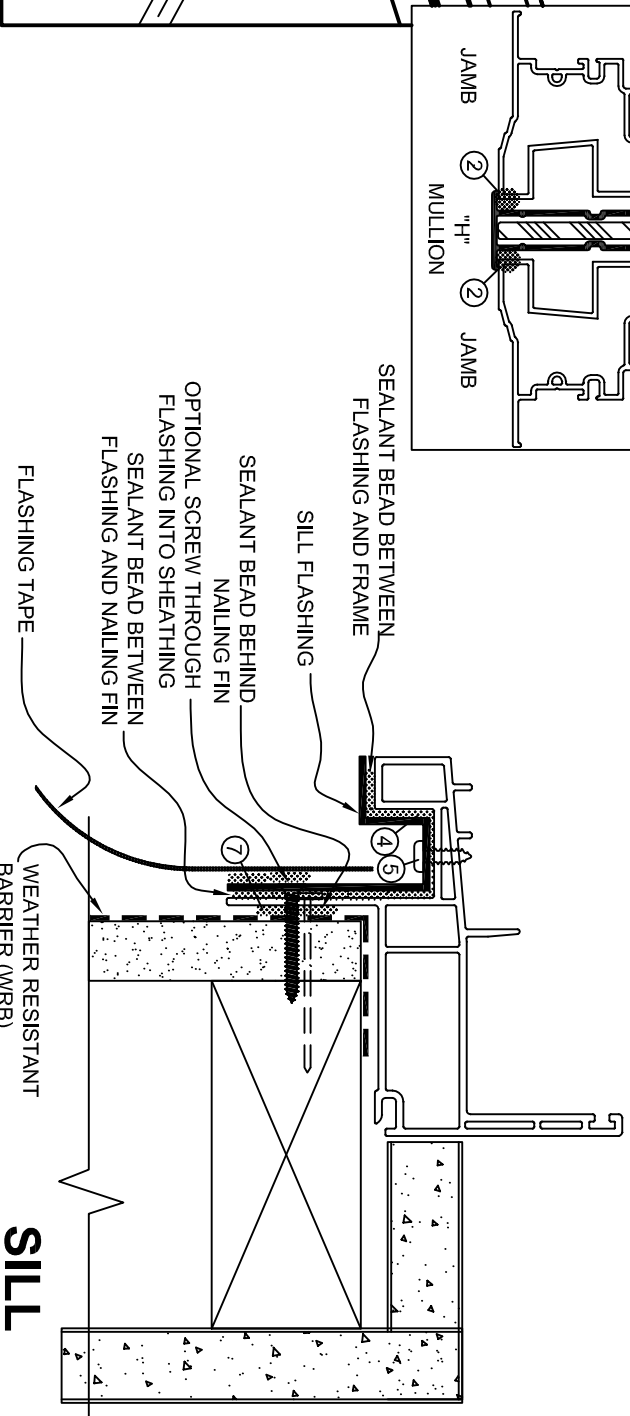
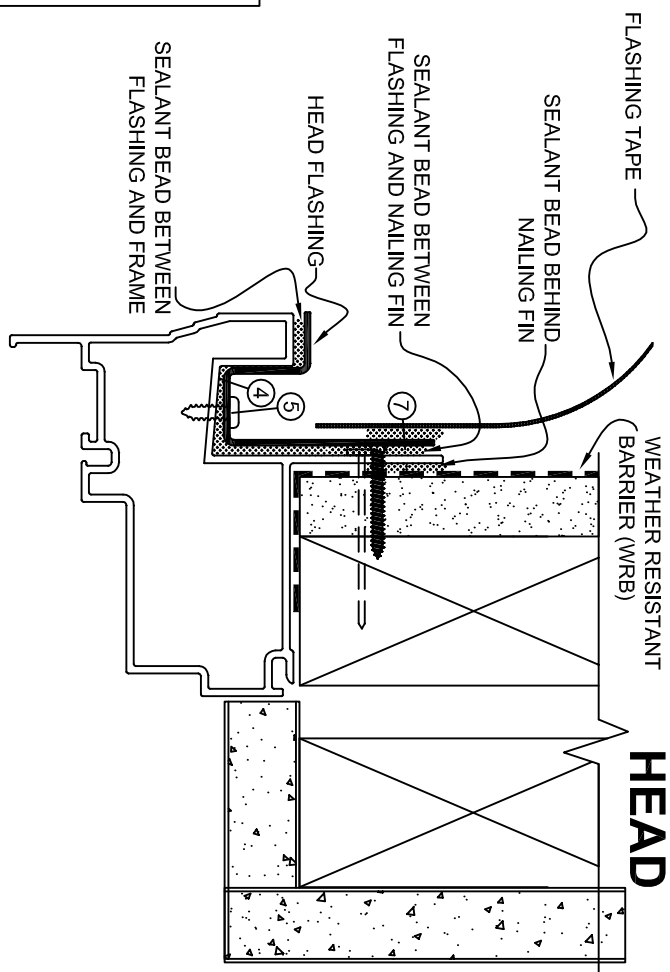
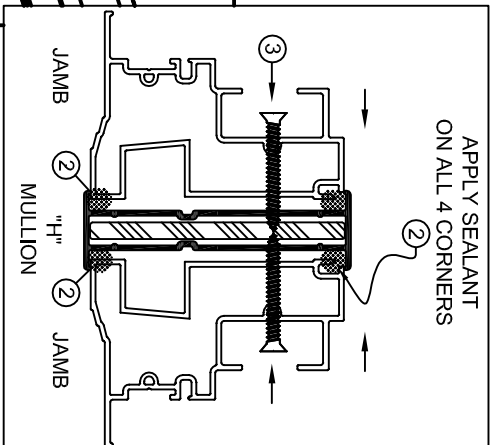
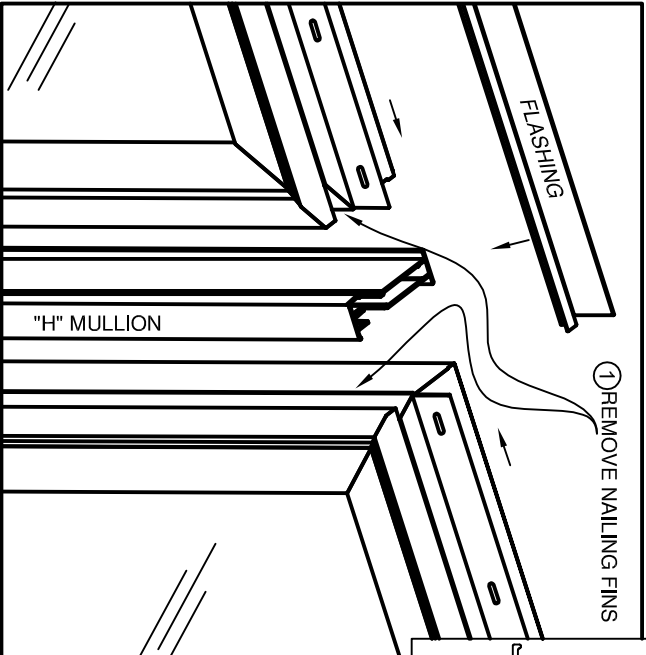


FIELD MULLING INSTRUCTIONS

1. REMOVE NAILING FIN FROM THE TWO JAMBS TO BE CONNECTED.
2. APPLY SEALANT BETWEEN "H" MULLION AND THE TWO JAMBS FULL LENGTH ASSEMBLE.
3. USE FASTENERS (#8X 1/2" PHILLIPS FLAT TEK) TO SECURE THE JAMBS TO THE "H" MULLION. APPLY SCREW AT 6" FROM EACH END AND EVERY 12" IN THE MIDDLE THROUGH BOTH JAMBS.
4. APPLY SEALANT TO HEAD FLASHING. INSERT FLASHING INTO THE HEADER "J" CHANNEL AT THE MULLION ASSEMBLY.
5. FASTEN FLASHING TO THE BOTTOM OF THE "J" CHANNEL WITH #6X 3/8" PHILLIPS PAN SCREW.
6. REPEAT STEPS 4-5 FOR THE SILL. **SCREWS MUST NOT BE PLACE MORE THAN 1 3/4" FROM CENTER OF THE SILL.**
7. APPLY SILICONE SEALANT AROUND THE PERIMETER ON THE BACK SIDE OF THE NAIL FIN.
8. INSTALL MULLED WINDOW SQUARE, PLUMB AND LEVEL INTO ROUGH OPENING (FASTEN THROUGH EVERY OTHER SLOT).



SILL

HEAD

Copyright © 2008
ROYAL GROUP, INC.
 All Rights Reserved

UNLESS OTHERWISE SPECIFIED
 DIMENSIONS ARE IN INCHES
 MATERIAL / COLOUR:
AS SPECIFIED



NOTICE: THE INFORMATION CONTAINED HEREON IS THE PROPERTY OF ROYAL GROUP, INC. ITS CONTENTS ARE CONFIDENTIAL AND MUST NOT BE COPIED OR SUBMITTED TO OUTSIDE PARTIES FOR USE OR EXAMINATION WITHOUT THE WRITTEN PERMISSION OF ROYAL.

COMFORT VIEW PRODUCTS

1900 SERIES - SINGLE HUNG MULLING INSTRUCTIONS

DO NOT SCALE DRAWING

WALL THICKNESS: AS MARKED	SCALE: N.T.S	ACAD NO.:	D210-005
DRAWN: NAS	CHECKED: D.R.C.	SHEET:	1 OF 1
DATE:	AUG-06-2008	PROGRAM NO.:	